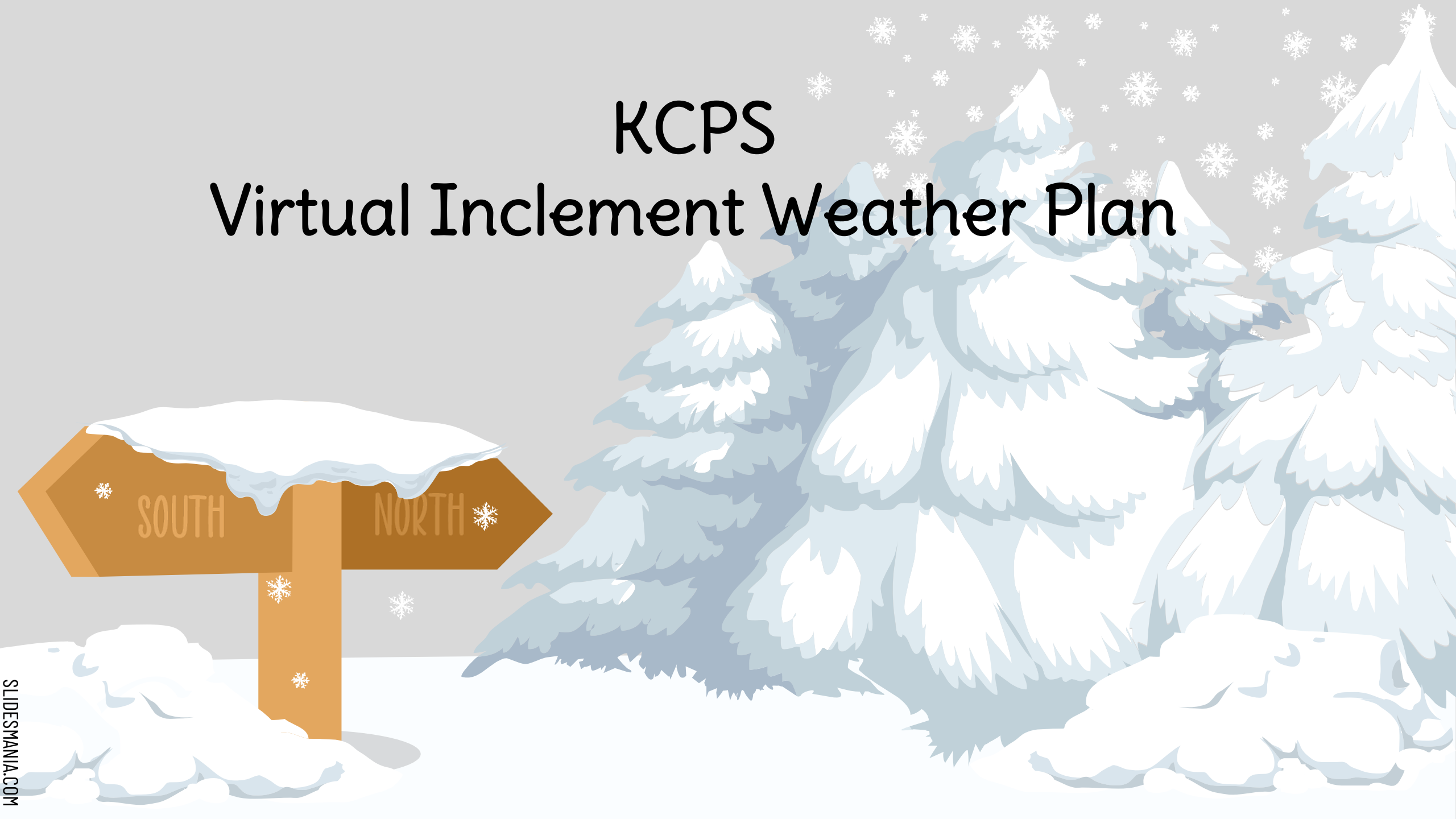


KCPS

Virtual Inclement Weather Plan

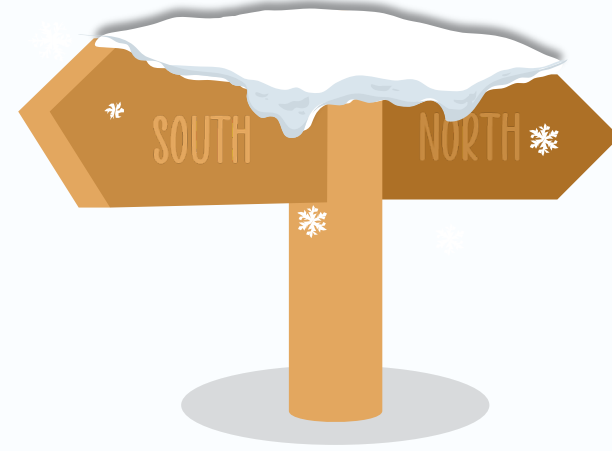
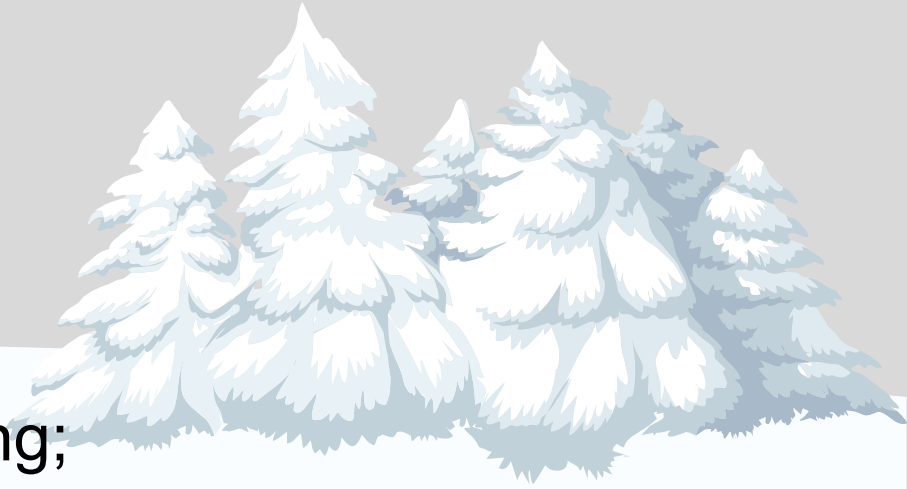


The Maryland State Department of Education (MSDE) requirements for Virtual Inclement Weather Day

- ★ Minimum of four hours of synchronous instruction for all students each inclement weather day.
- ★ Attendance will be taken for all students and teachers during the virtual inclement weather day.
- ★ There will be opportunities for students to make up work missed during the virtual inclement weather day.
- ★ The Virtual Inclement Weather Day Plan will be posted on the local school system website. A link will be provided to MSDE upon approval of the Virtual Inclement Weather Day Plan by MSDE.
- ★ The Virtual Inclement Weather Day Plan must be presented at a publicly accessible local school system board meeting.

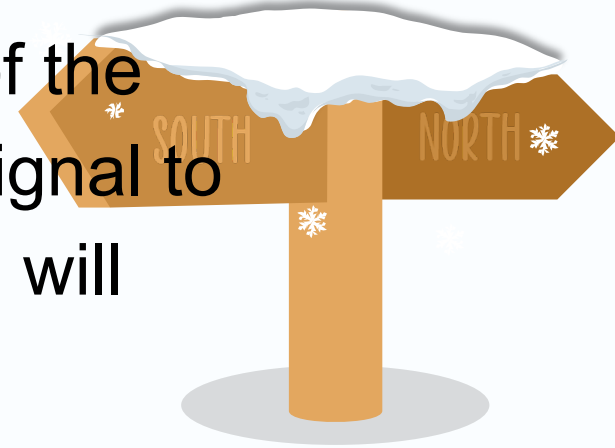
Introduction

KCPS recognizes the need for uninterrupted learning; therefore, in the event of inclement weather, KCPS is prepared with plans for remote learning on that day. These plans include a remote schedule including synchronous learning time with the teachers as well as asynchronous learning, giving students full access to a well-rounded curriculum. All KCPS students and staff have a district-issued device that will be taken home. KCPS continues to build its digital platform and is fully prepared to continue using it for weather emergencies.



Equity

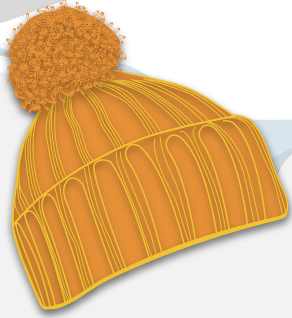
To prepare for virtual inclement weather days, all KCPS families were sent the following survey regarding their access to the internet. <https://forms.gle/ceb97Re6wsrNK1HLA> Data collected from the survey was used to provide hotspots to families in need to ensure all KCPS students have equal access to instruction should a virtual inclement weather day occur. In areas of the county where hotspots do not receive a strong enough signal to work properly and there is no internet access, the school will provide a paper option for those students.



Delivery of Instruction

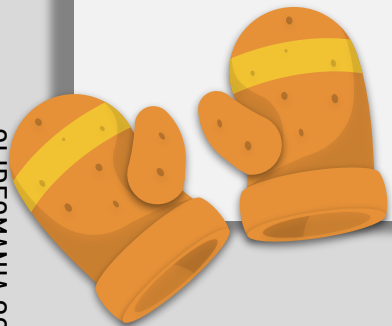
Teachers will deliver live instruction via our Learning Management System (LMS), Schoology. Within the Schoology LMS, teachers are able to schedule live sessions called Conferences. Schoology also offers a place for teachers to house materials for students that are essential for the day's lesson. KCPS will post Schoology "Refresher" Videos to the district website to assist parents in navigating the Schoology platform.

Elementary



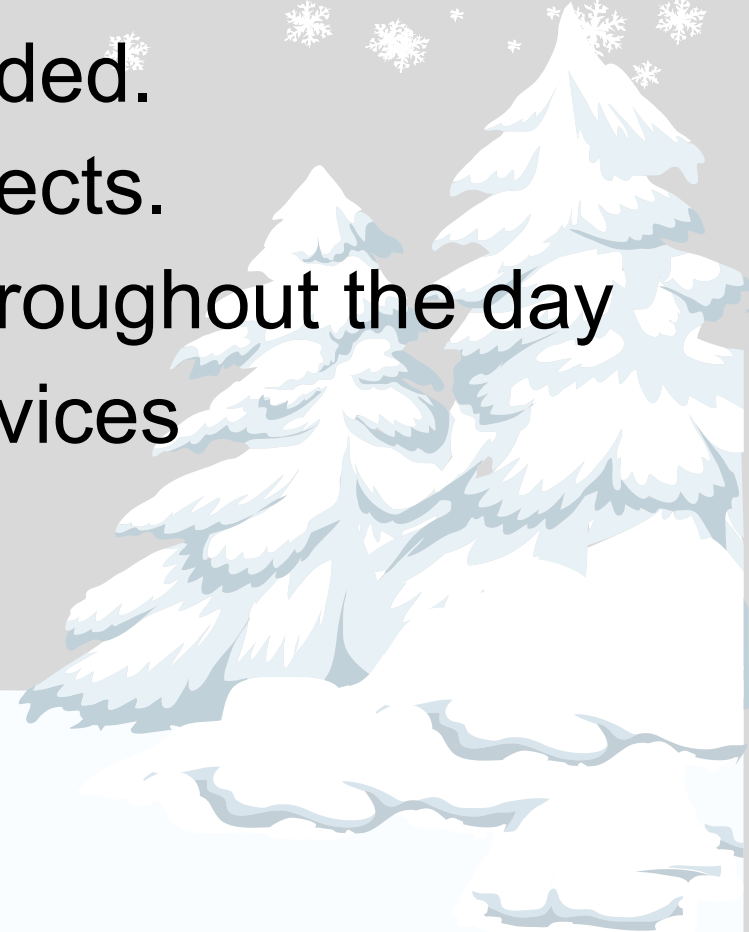
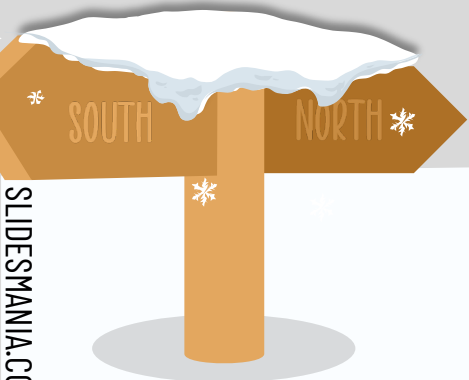
On a virtual learning inclement weather day, in accordance with MSDE virtual requirements, Elementary students will have an opportunity to:

- ❖ Receive live, remote instruction from their teachers
- ❖ Join their classmates for class meetings and social-emotional learning experiences.
- ❖ Engage in small groups for instruction as needed.
- ❖ Work independently on assignments and projects.
- ❖ Take movement breaks and screen breaks throughout the day.
- ❖ Have lunch and playtime independently and with family.
- ❖ Participate in special area class instruction in art, music, library, and physical education
- ❖ Receive Special Education and/or related services



Middle and high school students will have an opportunity to:

- ❖ Receive live, remote instruction in all of their courses
- ❖ Engage in small groups for instruction as needed.
- ❖ Work independently on assignments and projects.
- ❖ Take movement, lunch, and screen breaks throughout the day
- ❖ Receive Special Education and/or related services



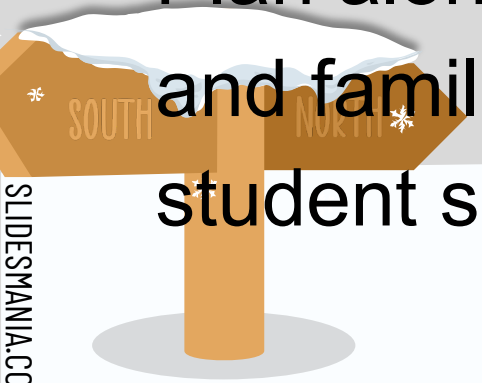
Accommodations for Students with Disabilities



- All special education services will continue as indicated in the student's Individualized Education Plan (IEP) and will be provided through an inclusive setting
- Services will be provided synchronously, asynchronously, and/or through supplemental materials
- Special education teachers and general education will collaborate to ensure that special education students and students with a 504 plan receive accommodations

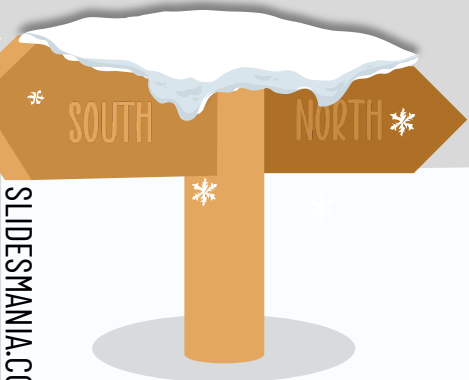
Communication Process

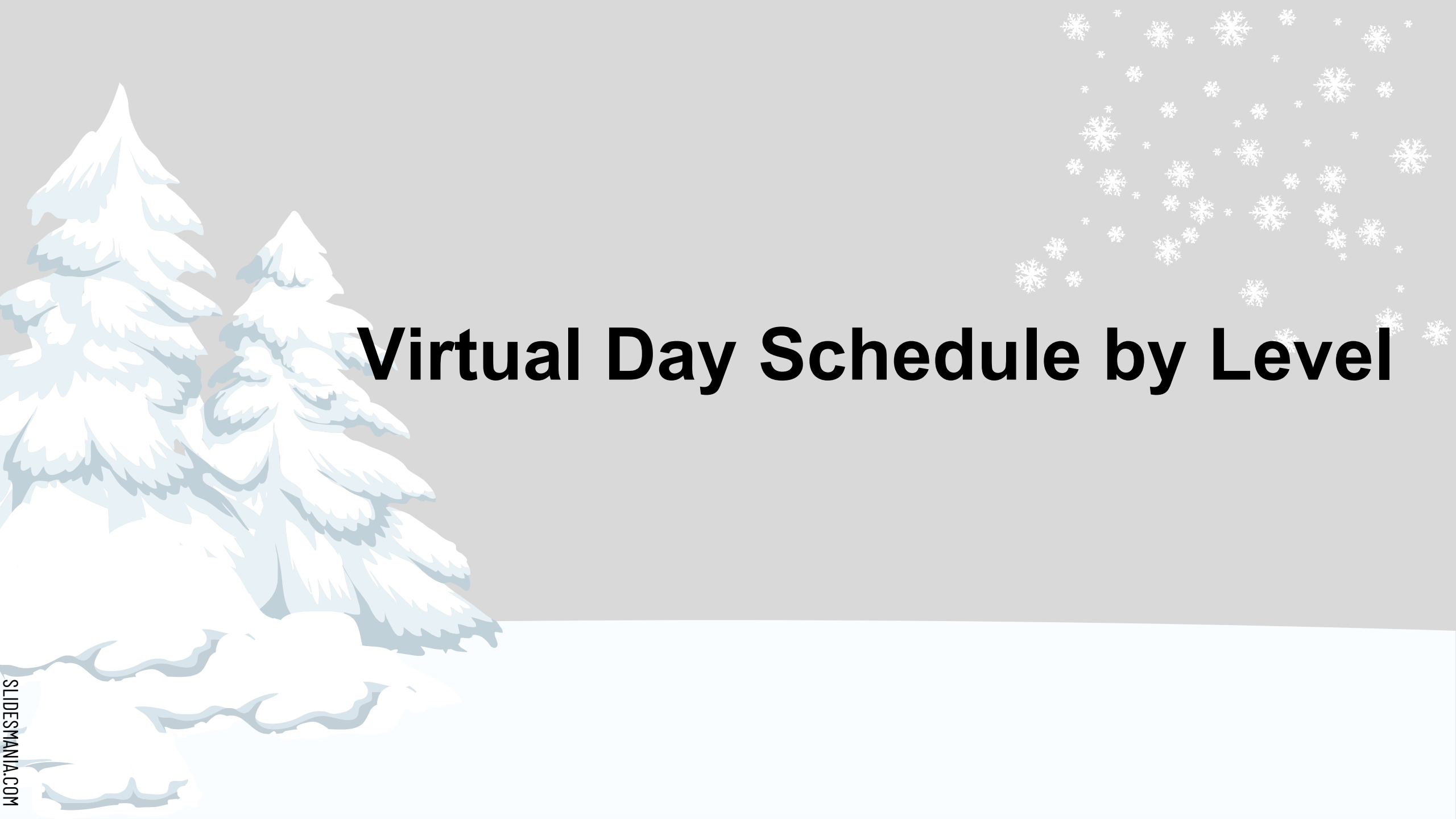
- KCPS will provide as much notice as possible and at a minimum will inform schools and the community as soon as it is feasible the day before a Virtual Inclement Weather Day will occur.
- The Virtual Inclement Weather Day Plan will be posted on the KCPS main website page after the plan is approved by MSDE.
- Schools will communicate the Virtual Inclement Weather Day Plan along with school-specific details with their staff, students, and families using a variety of strategies which may include student schedules, school-specific information, etc.



Attendance Policy for a Virtual Inclement Weather Day

- Students will be expected to be present for live, synchronous instruction to be counted present.
 - Exception: A student with no internet access due to the location of their home even with a hotspot will be marked present upon submission of the alternative work the following day.
- If a student is absent for instruction their absence will be coded as an excused absence upon completion of the make-up work in accordance with the KCPS Make-Up work policy.





Virtual Day Schedule by Level

Elementary

8:00 - 9:00 Related Service Providers will schedule virtual services throughout the day

9:15 - 10:15 Live ELA Instruction/Special Education Services/Small Group Instruction/Related Services

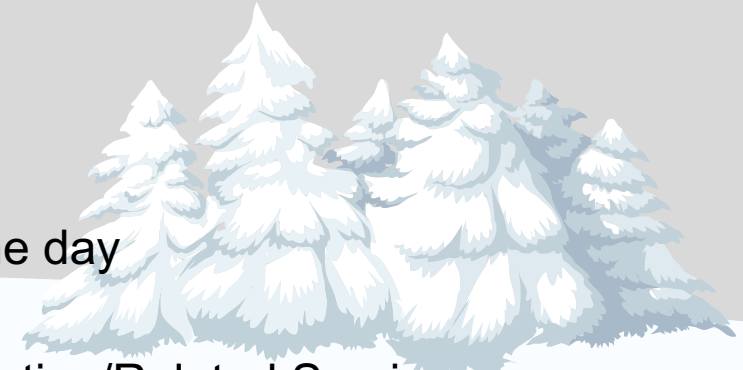
10:30 - 11:30 Live Mathematics Instruction/Special Education Services/Small Group Instruction/Related Services

11:30 - 12:30 Lunch

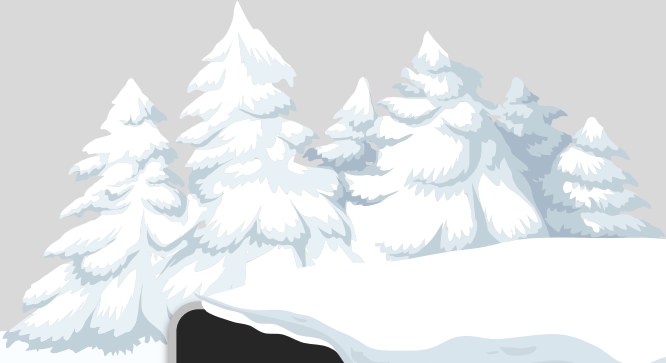
12:30 - 1:30 Small group/Asynchronous Work/Special Education services for small group and individual instruction/Related Services

1:30 - 2:30 Specials/Related Services

2:30 - 3:30 PLC Work



Middle School

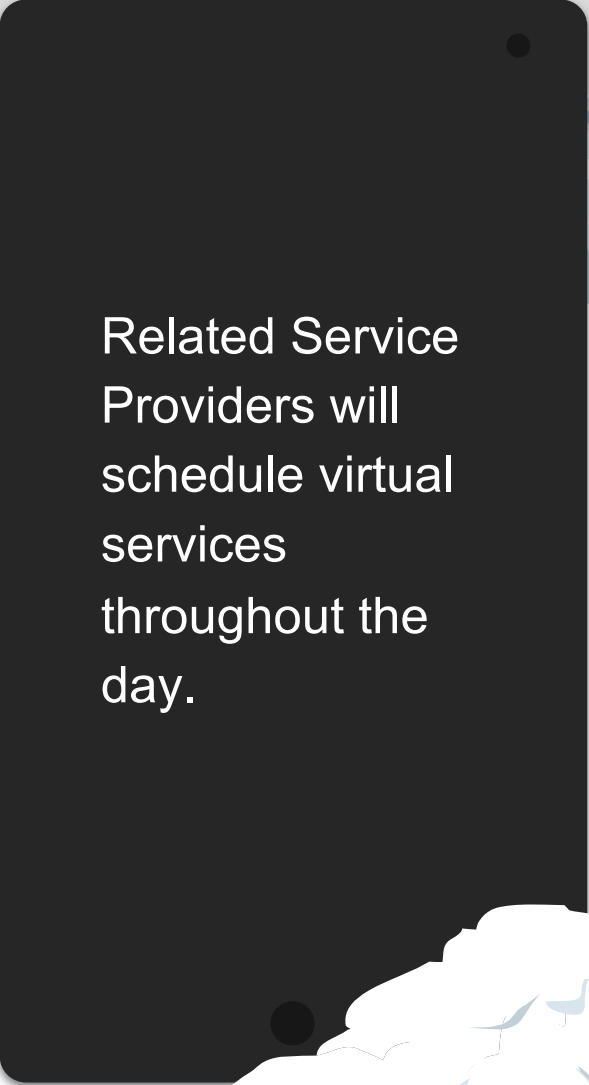


*Life Skills and Behavior Support will receive live, synchronous services from 8:00 to 12:00. Lunch will be from 12:00 to 1:00 and students will participate in asynchronous activities from 1:00 to 2:00. Related Service Providers will schedule virtual services throughout the day.

Snow PD	School PD	Time
1	6 th 1-2 7 th 1-2 8 th 3-4	8:00 – 9:00
2	6 th 3 7 th 3 8 th 5	9:15 – 10:15
3	6 th 4 7 th 4 8 th 6	10:30 – 11:30
Lunch	ALL	11:30 - 12:30
4	6 th 7-8 7 th 5-6 8 th 7-8	12:30 - 1:30
PLC Work	ALL	1:45 - 2:30

High School

Snow PD	Time
1	8:00 – 9:00
2	9:15 – 10:15
3	10:30 – 11:30
Lunch	11:30 - 12:30
4	12:30 - 1:30
	1:45 - 2:30 PLC Work



Related Service Providers will schedule virtual services throughout the day.